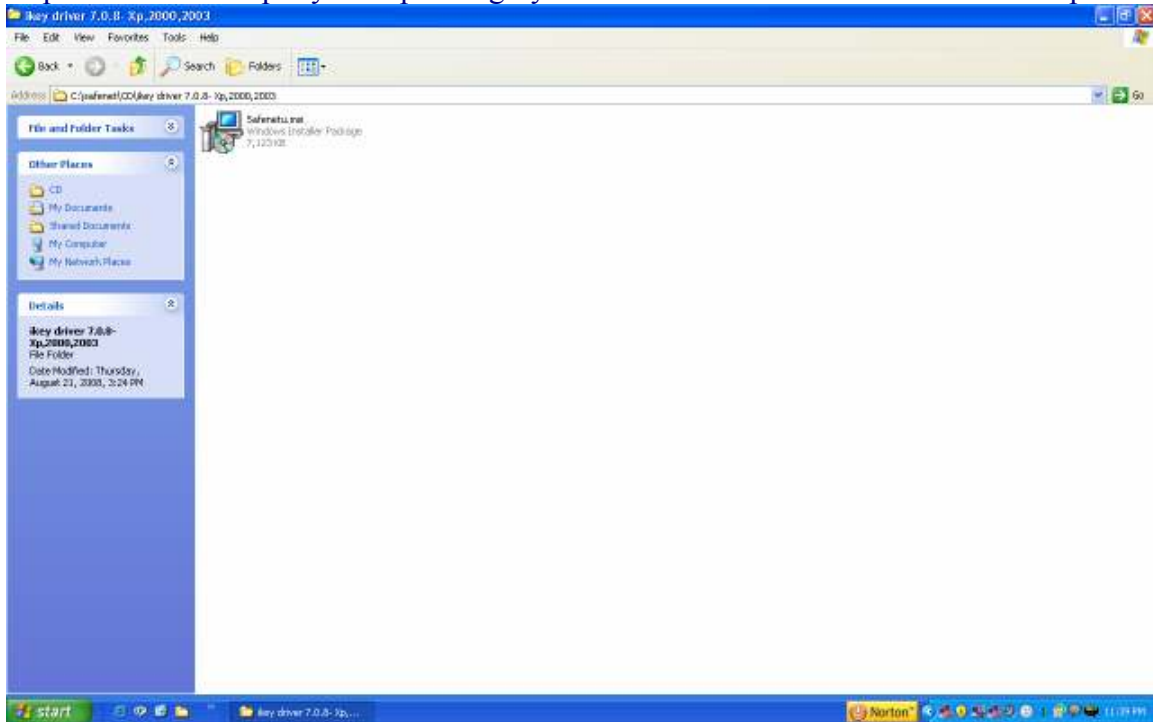


***INSTALLATION PROCEDURE  
OF  
SAFENET iKEY SOFTWARE***



## Installing Safenet ikey Driver

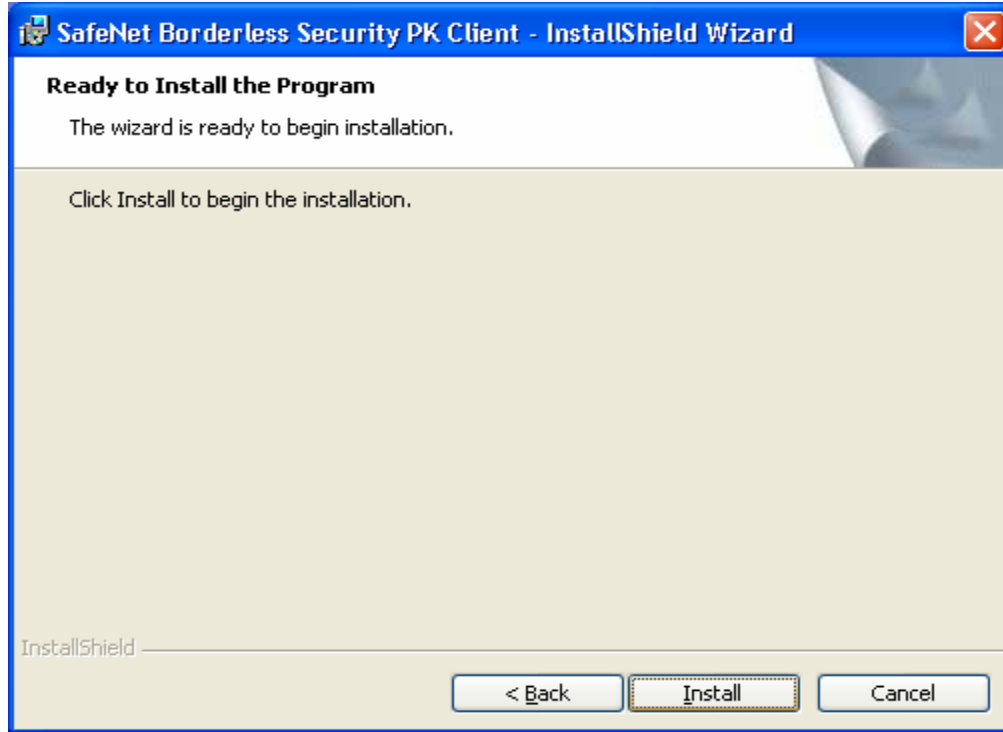
→ Browse the CD and there will be Folders for the XP and Vista Operating System. Double Click on the respective folder as per your Operating System and the double Click over the "Setup.exe" file.



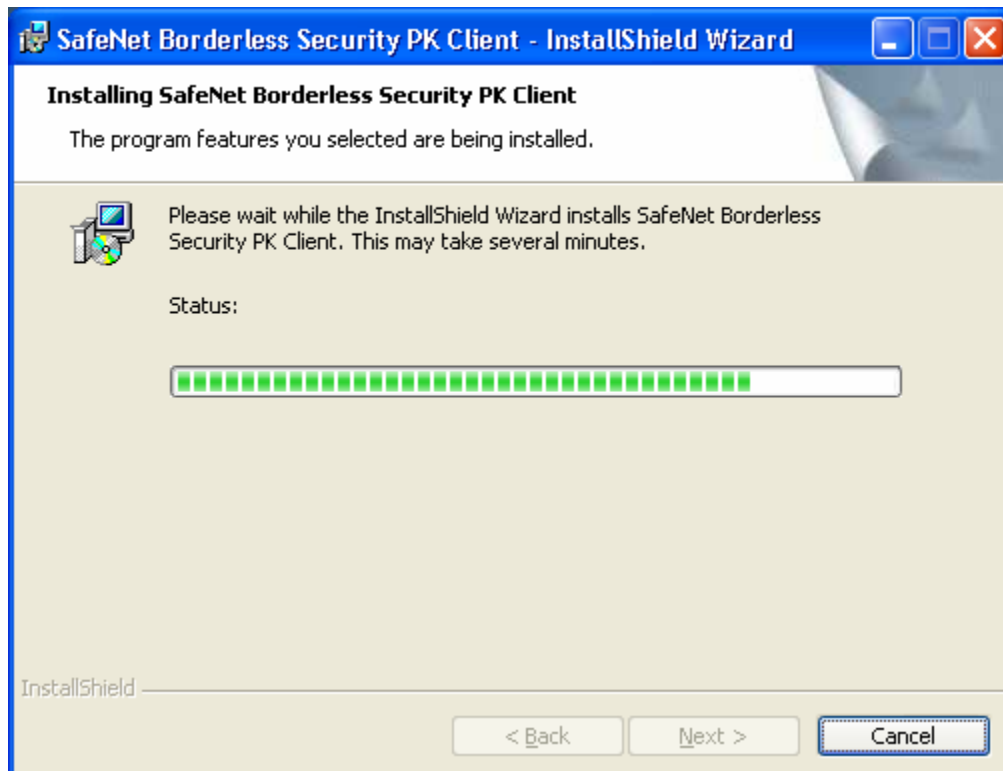
→ Click on "Next" to proceed.



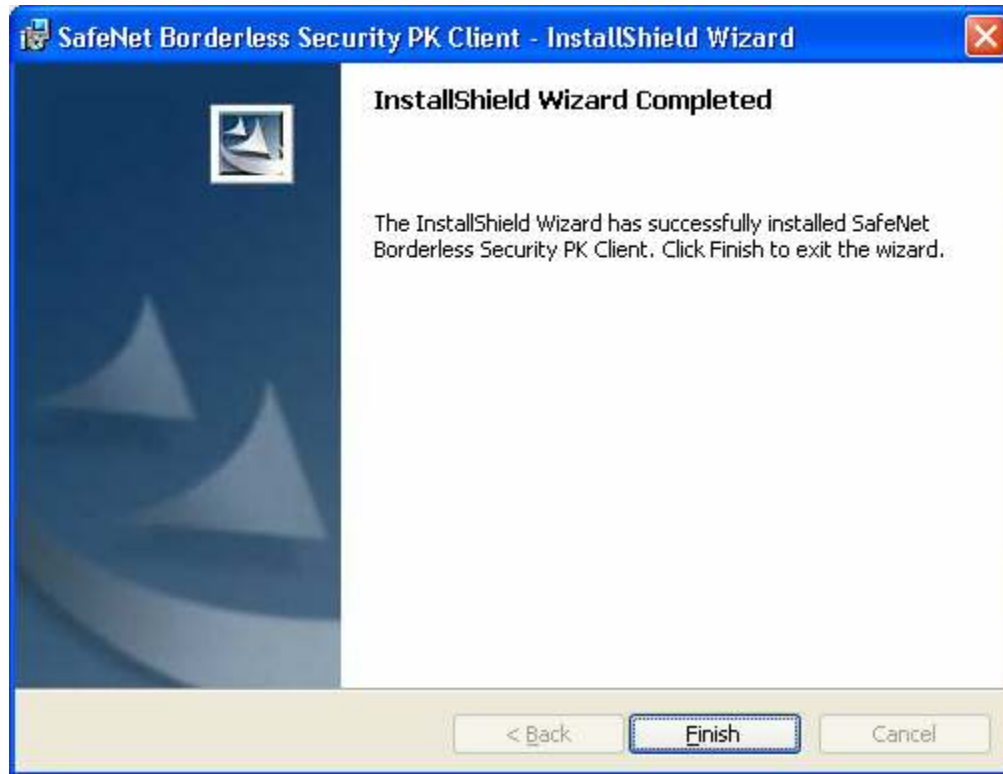
→ Click on install to start the installation process.



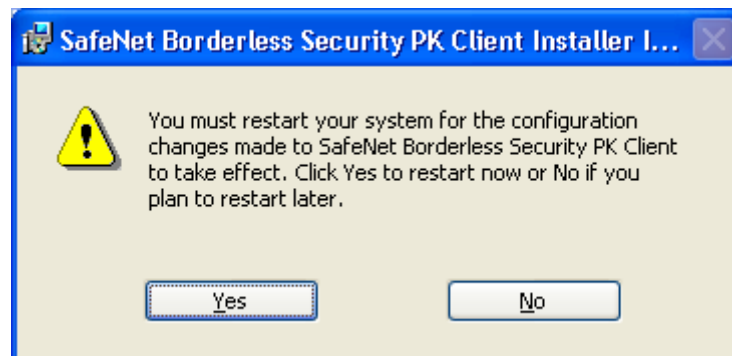
→ Installation process begins, wait for few seconds.



→Installation completed, just click “Finish”.

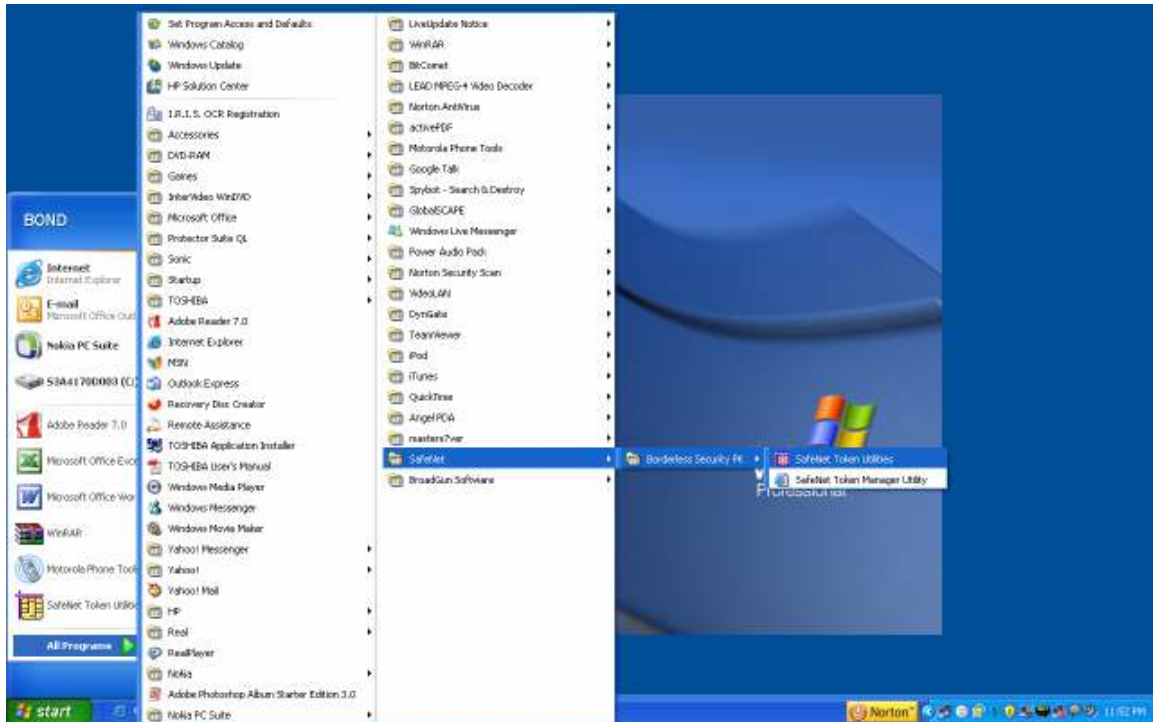


→Click “Yes”, it will restart the system. Driver is installed now.



## GUI for Safenet ikey Utilities

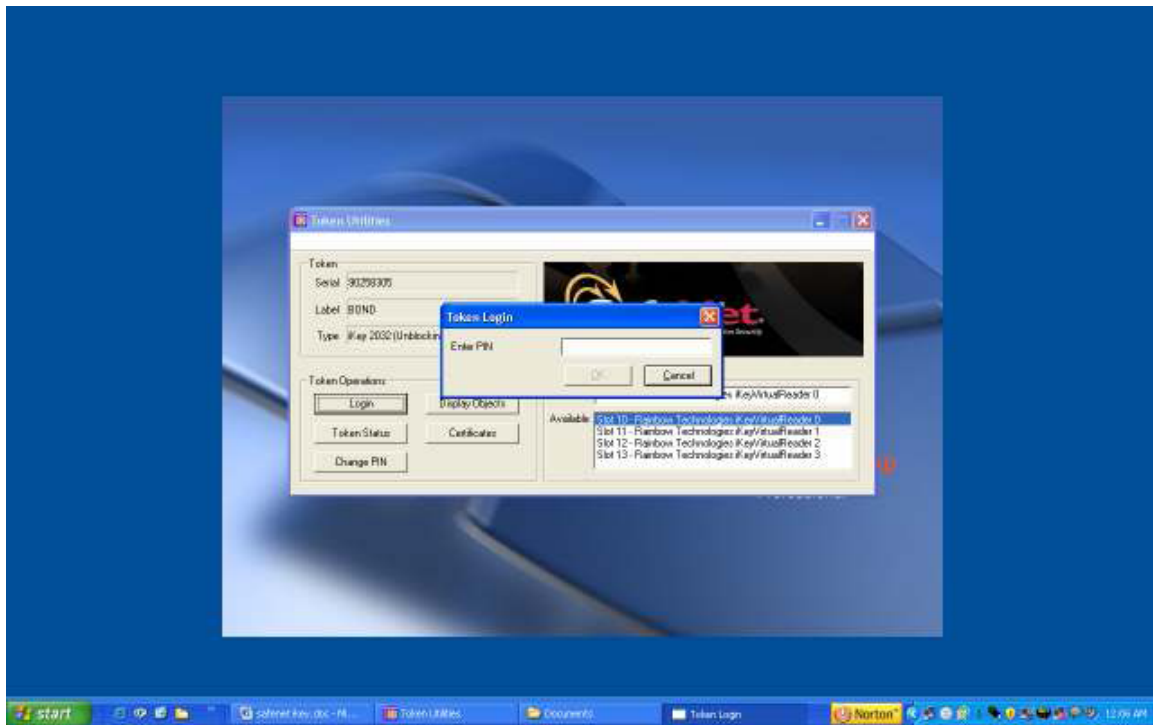
→ Go to Start → All Programs → Safenet → Borderless security PK → Safenet token utilities



→ Insert the ikey token and you will get the following GUI. Click “Login”.



→ Enter Pin/Password, the default will be “Password#1” and click “OK”



→ The certificates are visible

